



WiFi Garage Door Control Kit

TLL331171 User manual

Compatible with Alexa and Google Home

This manual is available in more languages on smart.tellur.com



INTO YOUR FUTURE

Product Diagram



Smart Garage Controller



3M Stickers



Line Holders



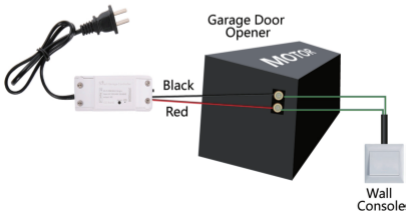
Ties



Brackets



Screws



Specifications

Input voltage: AC100-250V

Max current: 10A

Max power: 2200W

Remote control: Yes, using Tellur Smart app

Functions: Open/Close garage gate, Timer, Schedule

Wireless frequency: 2.4GHz

WiFi standard: IEEE 802.11b/g/n

Security: WPA-PSK/ WPA2-PSK /WPA/WPA2/WEP/WPS2/
WAPI

Encryption type: WEP/TKIP/AES

Compatibility: Devices with Android 4.1 / iOS 8 or higher

Package includes: 1x Controller Kit, 1x 3M stickers, 1x Screws
2x Brackets, 1x Ties and holders



Warnings!

1. Start the installation only after you successfully added the product to Tellur Smart app;
2. Make sure to switch off the power supply before installing or maintaining the product;
3. To avoid the risk of fire or electric shock, please make sure you install the product following its electrical rating (AC220-240V);
4. To avoid wiring damage or abrasion, do not expose the wire to edges of metal or other sharp objects;
5. Please make sure your garage door is closed before starting the installation.

LED State

Device Status	LED State
EZ mode	Indicator flashes quickly
AP mode	Indicator flashes slowly
Triggered	LED indicator will rapidly blink, and it will turn OFF after the scheduled time
Suspend mode	LED indicator is off
Reset	LED indicator lights up for 4 seconds; once the LED turns off, the device enters configuration mode.

How to reset?

- (1) Press the reset button for 6 seconds until the LED indicator is flashing rapidly. The device will enter EZ mode.
- (2) Press the reset button again for 6 seconds until the LED indicator is flashing slowly. The device turns to AP mode.

Product features

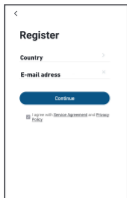
- Remote control via Tellur Smart app
- Voice control via Google Assistant and Amazon Alexa
- Customizable, supports automation & smart scenarios
- Push notifications for device state
- Timer, schedule, history records
- Device sharing allows added family members to control the device

Pairing with Tellur Smart app

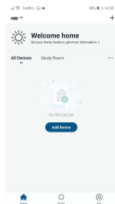
Warning: The garage door will be activated when the kit is registered successfully to Tellur Smart app. Start installing it with the door closed first.

Download and install the Tellur Smart app for either iOS or Android devices.



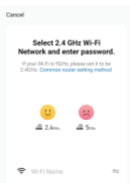


Once downloaded, the app will ask you to register your device. Enter your email, select the country you live in and create a password for your Tellur Smart account.



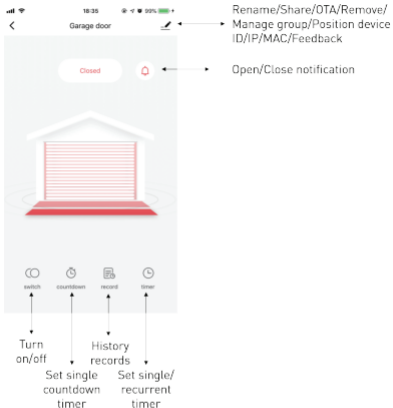
Turn on the controller and make sure the red and blue lights are flashing alternatively.

Open Tellur Smart app click "+" and select Smart Garage Door Opener from the list. Select your WiFi network and input the network's password.



Once Tellur Smart app is installed on your device and you have added your smart device to your app you will be able to control it.

Features available in Tellur Smart app



Failed to add device?

1. Make sure the device is powered on.
2. Check the WiFi connection of your phone.
3. Check if the device is in pairing mode.
Reset your smart device to enter pairing mode. Please refer to the "How to reset device" section.
4. Check router or related:

If you use a dual-band router, select the 2.4GHz network to add the device. You also need to enable the router's broadcasting function. Set encryption method as WPA2-PSK and authorization type as AES, or set both on "auto".

5. Check if the WiFi signal is strong enough.

To maintain the signal strong, keep your router and the smart device as close as possible.

6. Wireless mode should be 802.11.b/g/n

7. Make sure you don't exceed the maximum number of registered devices supported by the app (150).

8. Check if the router's MAC filtering function is enabled. If so, remove the device from the filter list and make sure the router is not prohibiting the device connection.

9. Make sure the WiFi password entered in the app is correct.

EZ and AP connection modes:

Smart devices can be connected using two modes:

EZ represents the easiest way of connecting and enabling a smart device. You will need to have the device, active wireless network through with login password and Tellur Smart APP installed on a smartphone / tablet.

AP mode can be used to configure and enable a smart device first with the smartphone / tablet and later with the Wi-Fi network.

How to add device under EZ mode?

1. Make sure the LED indicator/light flashes quickly.

2. Make sure the phone is connected to WiFi.

3. Tap "Add device" in Tellur Smart app and enter the WiFi's network password.

4. In the device list, select the device you want to pair and

add it.

How to add device under AP mode?

1. Make sure the LED indicator/light flashes slowly.
2. Tap "Add device" in Tellur Smart app and select "AP mode" from the top-right corner. Connect to the device's hotspot first and then proceed to connect it to the WiFi network.
3. Tap "Next" to add device.

Can I control the device with 2G/3G/4G network?

When adding the device for the first time, the device and the phone need to be connected to the same WiFi network. Once the device has been successfully paired with Tellur Smart app, you can remotely control it via 2G/3G/4G networks.

How can I share my device with family?

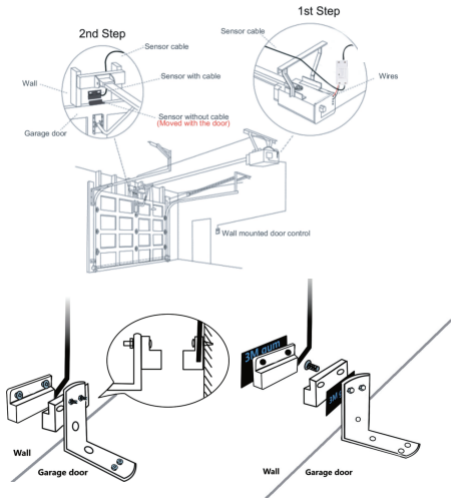
Open Tellur Smart app, go to "Profile" -> "Device sharing" -> "Sharing sent", tap "Add sharing" and share the device with the added family members.

Notice - users must install the Tellur Smart app on their device in order to see shared devices.

How can I manage the devices shared by others?

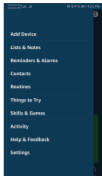
Open App, go to "Profile" > "Device Sharing" > "Sharings Received", then you can find the devices shared by other users. To delete a shared device, swipe left.

Product installation



Alexa integration:

1. Go to Home menu on Alexa app.
2. Select "Skills" / "Skills & Games".



3. Type Tellur Smart in the search bar.



4. Select Tellur Smart and click "Enable" to activate Tellur Smart.

Enter your Tellur Smart account and password. Now you have finished the integration with Alexa.

Tellur Smart app is now skilled with Alexa and you can vocally control the devices added in Tellur Smart. Remember - if you rename your smart devices, use a simple name that Alexa can recognize.

To control your smart devices through Alexa, use simple and concise voice commands.

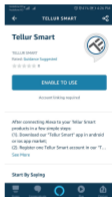
Here's an example for bedroom lighting:

"Alexa, turn off bedroom light"

"Alexa, turn on bedroom light"

"Alexa, dim bedroom light"

"Alexa, set bedroom light to red"



Google Home integration

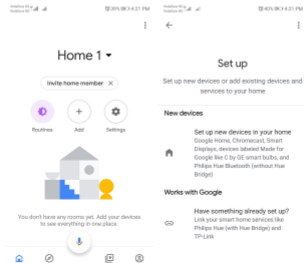
Before using Google Home to control your devices, make sure you meet the following conditions:

- You have a Google Home device or an Android device with Google Assistant.
- You have the newest version of Google Home app.
- You have the newest version of Google app (Android only).
- The device display language is set to English US.
- You have the Tellur Smart app and a related account.

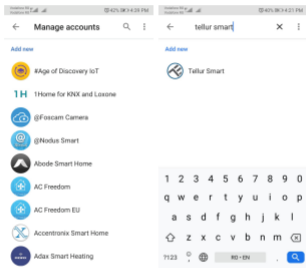
Add devices in Tellur Smart app (refer to app instructions) – you can skip this part if you've already added some devices to your Tellur Smart account. Make sure your devices' names are easily recognizable.

Link account in Home Control

1. Go to Google Home's homepage and tap "+".



2. Hit the "Add new" button, enter Tellur Smart in the search bar and select the app from the list. Next, select your Tellur Smart account's region, enter your Tellur Smart account and password and tap "Link now". After you assign rooms for devices, your devices will be listed in the Home Control page.



Now you can control your smart devices through Google Home. Take bedroom light as example – the supported voice commands are as below:

- **Ok Google, turn on/off bedroom light.**
- **Ok Google, set bedroom light to 50 percent.**
- **Ok Google, brighten bedroom light.**
- **Ok Google, dim bedroom light.**
- **Ok Google, set bedroom light to red.**



DISPOSAL AND RECYCLING INFORMATION

The crossed-out wheeled-bin symbol on your product, battery, literature or packaging reminds you that all electronic products and batteries must be taken to separate waste collection points

at the end of their working lives; they must not be disposed of in the normal waste stream with household garbage. It is the responsibility of the user to dispose of the equipment using a designated collection point or service for separate recycling of electrical and electronic equipment waste (WEEE) and batteries according to local laws. Proper collection and recycling of your

equipment helps ensure EEE waste is recycled in a manner that conserves valuable materials and protects human health and the environment. Improper handling, accidental breakage, damage, and/or improper recycling at the end of its life may be harmful for health and environment.



ABN Systems International

Str. Marinariilor, nr.29
Sector 1, Bucuresti, Romania

004.021.233.09.95

office@tellur.com
office@abnsystems.ro

www.tellur.com

Declaration of conformity

We, ABN SYSTEMS INTERNATIONAL S.R.L., Bucharest, Sector 1, Marinariilor street, nr. 31, we declare on own responsibility that the product below:

Product description: Tellur WiFi Garage Door control Kit, white

Brand: Tellur

Product code: TLL331171

It does not endanger life, health, work safety, does not have a negative impact on the environment and corresponds to the standards stated in the manufacturer's declaration of conformity.

The product is in compliance with the following standards and / or other normative documents:

RED – 2014/53/EU

EMC - EN 301 489-1 V2.2.0 (2017-03)

EN 301 489-17 V3.2.0 (2017-03)

RADIO - EN 300 328-1 V2.1.1 (2016-11)

LVD - EN 60950-1:2006 + A11:2009 + A1:2010+A12:2011+A2:2013

HEALTH - EN 62311:2008

RoHS – 2011/65/EU (RoHS 2.0)

The product bears CE mark, applied in 2020

Name: George Barbu
Function: General manager

Place and date:
Bucharest, 12-03-2020
Signed:

